



A429BAST ARINC 429 Bus Analyzer and Simulator



- Overall functional concurrency: recording | monitoring | transmission
- Definition of LRU databases
- Custom word format definitions
- Sub-labeling permitting multiple use of same label number
- Transmit functions (sine, step, ramp, list) assignable to any parameter
- Data replay of recorded or imported data
- Realtime re-transmission of manipulated receive data (offset, factor, mask)
- Realtime graphical monitoring through virtual instruments (meter, bar graph, single LED and multi LEDs)
- DataView – powerful recorded data analysis tools





techSAT
mastering
realtime
complexity

A429BAST ARINC 429 Bus Analyzer and Simulation Tool

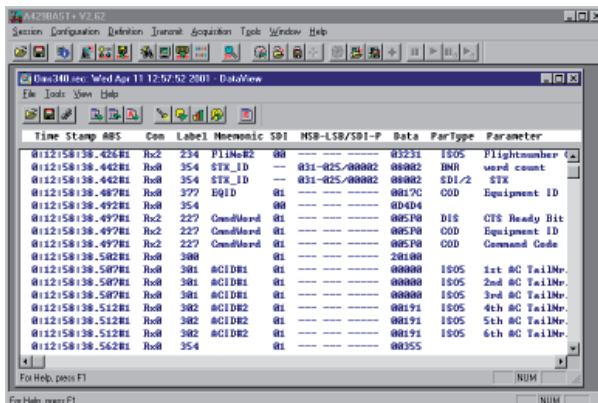
General

TechSAT's PC-based ARINC 429 Bus Analyzer and Simulation Tool called A429BAST/A429BASTplus is a Windows application program that provides a powerful solution for companies engaged in the development, testing and maintenance of ARINC 429 avionics systems.

A429BAST allows for free word format definition, concurrent usage of transmit, monitor/recording and view functions, and provides comprehensive data stimulation and analysis tools - all integrated in the intuitive graphical user interface of Microsoft Windows.

A429BAST is used in combination with the A429PCI-2G (PCI) + A429IPM (IP) interfaces, or – for portable solutions – with the A429PCC (PCMCIA) cards from TechSAT.

It can be run on any of the following Windows platforms: Windows XP, 2000, ME, NT, and 9x.



BAST Main Window with Data View tool



Various GraphMon Objects displaying the values of A429 parameters

Technical Data

BAST Main Features

- Simultaneous multiple channel acquisition and transmission capabilities with configurable speed, parity, and Tx mode (burst vs. optimized)
- Unrestrained definition of word formats beyond ARINC 429 DITS standard
- Definition of UUT LRU database (pre-defined database on demand)
- Sub-labeling permitting multiple use of same label number
- Enhanced session and setup file concept allowing loading and saving of entire session scenario, including all windows and loaded files
- Transmission definition with automatic schedule check and optimization
- Quick Look of overall bus activity
- Raw and interpreted data monitoring
- Real-time graphical monitoring through mapping of parameters to virtual instruments (single/multiple scroll graphs, meter, single/multiple LEDs, vertical/horizontal bar)
- Data recording with optionally preset maximum label number, file size, and recording interval/period
- Label acquisition filters and triggers on data
- Status Window providing overall system states information
- DataView offline tool: powerful stand-alone data browser and analyze utility providing data selections, multiple sort and search functions, ASCII export and import, and free configuration of the DataView displays down to parameter level
- Libraries available as DLL
- Comprehensive online help

BASTplus Extensions

- Transmit functions (Sine, Step, List) for dynamic data transmissions
- Data replay of previously recorded data
- Real-time re-transmission of manipulated (offset/factor/mask) receive data (logical error injection and label substitution)

HW and SW Options

- At least 1 A429PCI + 1 A429IPM or 1 A429PCC interface • multiple interfaces supported
- Windows XP | 2000 | NT | ME | 9x